

YEAR 2023

CORE STATION 3024

ROAD NETWORK MAJOR

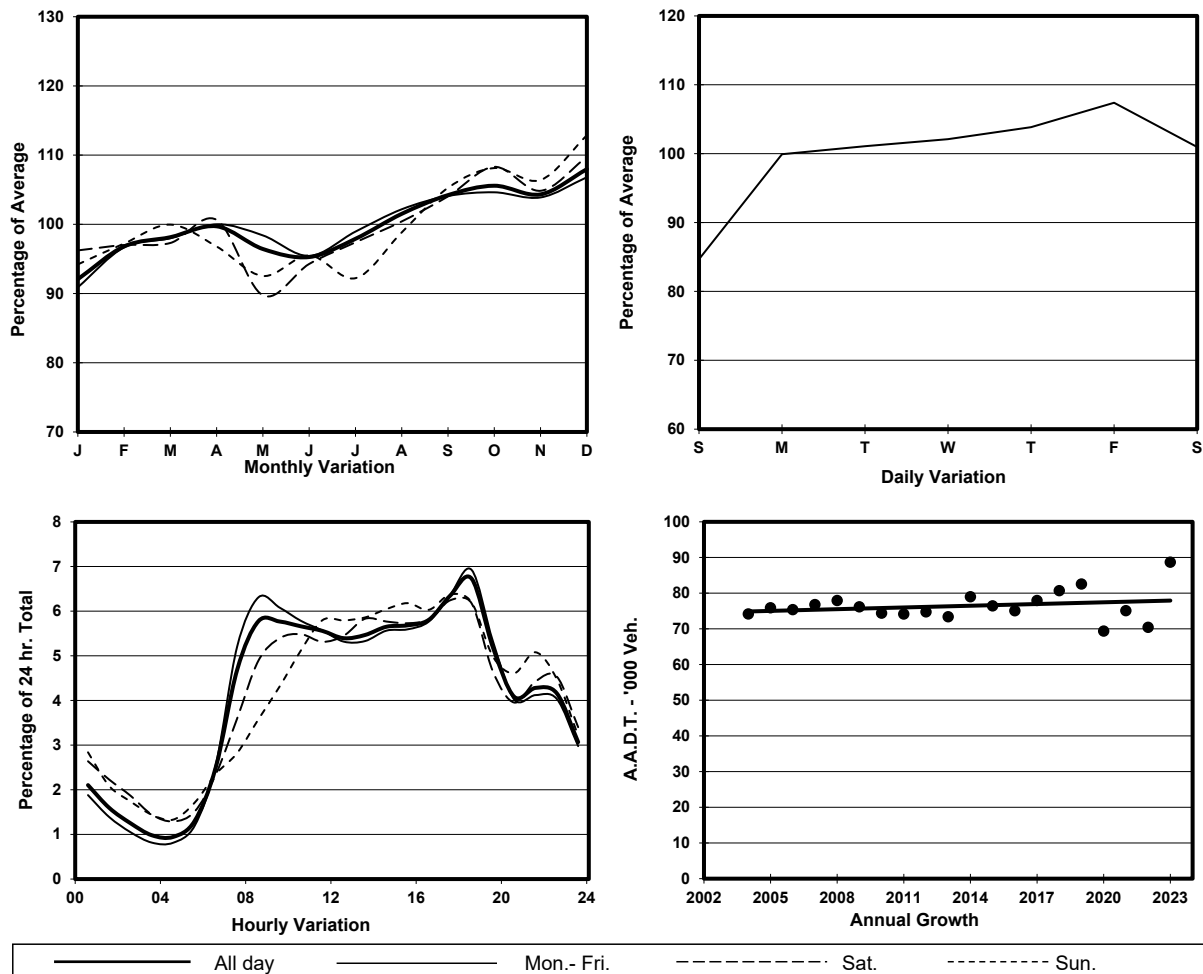
ROAD TYPE EXPRESSWAY

LINK WEST KOWLOON HIGHWAY (from SLIP RDS TO & FROM LIN CHEUNG RD & YAU MA TEI INT N/B RAMP to HING WAH ST W)

2.7m 14.8m 15.8m 3m

Northbound 3 lanes Southbound 4 lanes

## 1. TRAFFIC FLOW VARIATION AND GROWTH



## 2. TRAFFIC CHARACTERISTICS (BY DIRECTION)

Parameter	All - Day	Mon. - Fri.	Sat.	Sun.
<b>SOUTH BOUND</b>				
A.A.D.T.	48780	50520	49500	42430
R 12 / 24 - %	72.3	73.7	69.1	67.6
R 16 / 24 - %	87.3	88.2	85	85.1
AM Peak Hour	0800-0900	0800-0900	0900-1000	0900-1000
One-way flow at AM peak hour	3340	3740	3180	2020
T - % (AM)	-	12.7	-	-
PM Peak Hour	1800-1900	1800-1900	1800-1900	1700-1800
One-way flow at PM peak hour	3000	3080	3040	2750
T - % (PM)	-	5.1	-	-
Prop.of commercial vehicles - 16 hr.	-	10.4	-	-
<b>NORTH BOUND</b>				
A.A.D.T.	39880	41530	40920	33130
R 12 / 24 - %	63.9	65.1	61.6	59.7
R 16 / 24 - %	84.9	86.3	81.2	81
AM Peak Hour	0900-1000	0900-1000	0900-1000	0900-1000
One-way flow at AM peak hour	1890	2090	1700	1240
T - % (AM)	-	13.8	-	-
PM Peak Hour	1800-1900	1800-1900	1700-1800	1600-1700
One-way flow at PM peak hour	2970	3290	2780	2080
T - % (PM)	-	10.1	-	-
Prop.of commercial vehicles - 16 hr.	-	9.9	-	-

## 3. OTHER INFORMATION AND COMMENT

**4. Vehicle classification and occupancy - Monday to Friday**

Time		Class of vehicle									
		Motor Cycle	Private Car	Taxi	Private LB	PLB	Goods veh.		Non Fr. Bus	Fr. Bus	
							Light	M & H		SD	DD
0700-0800	Pro	5.4	46.0	17.3	1.1	0.0	16.4	8.4	1.7	0.0	3.6
	Ocp	1.0	1.2	2.0	8.0	0.0	1.2	1.1	16.8	0.0	63.6
0800-0900	Pro	2.9	51.5	16.2	0.3	0.0	17.6	4.7	2.3	0.0	4.5
	Ocp	1.0	1.2	2.0	9.2	0.0	1.2	1.1	30.4	0.0	70.2
0900-1000	Pro	1.0	50.3	15.3	0.2	0.0	21.0	7.4	1.7	0.0	3.0
	Ocp	1.0	1.2	2.0	2.0	0.0	1.1	1.1	8.9	0.0	43.1
1000-1100	Pro	1.8	45.9	16.6	0.4	0.0	23.4	7.7	1.0	0.0	3.1
	Ocp	1.0	1.3	2.0	4.2	0.0	1.1	1.1	10.3	0.0	40.9
1100-1200	Pro	2.1	44.0	22.5	0.2	0.0	17.2	9.5	1.8	0.0	2.5
	Ocp	1.1	1.2	2.0	7.0	0.0	1.2	1.1	10.1	0.0	37.4
1200-1300	Pro	1.5	49.4	17.4	0.3	0.0	19.7	8.2	1.1	0.0	2.5
	Ocp	1.1	1.2	2.1	2.7	0.0	1.1	1.0	11.2	0.0	33.6
1300-1400	Pro	2.3	48.0	20.0	0.1	0.0	20.5	4.8	1.7	0.0	2.7
	Ocp	1.2	1.1	2.1	2.0	0.0	1.1	1.0	8.0	0.0	35.1
1400-1500	Pro	2.4	45.3	20.4	0.4	0.0	19.3	7.7	1.9	0.0	2.7
	Ocp	1.2	1.2	2.1	1.3	0.0	1.2	1.1	10.2	0.0	32.4
1500-1600	Pro	2.7	45.0	19.4	0.4	0.0	22.2	6.0	1.5	0.0	2.9
	Ocp	1.1	1.2	2.0	3.0	0.0	1.3	1.1	6.4	0.0	30.3
1600-1700	Pro	2.6	51.5	19.3	0.5	0.0	15.7	5.3	2.4	0.0	2.8
	Ocp	1.2	1.3	1.9	2.0	0.0	1.3	1.1	4.2	0.0	37.7
1700-1800	Pro	5.0	54.5	16.3	0.2	0.0	15.0	3.9	2.0	0.0	3.1
	Ocp	1.1	1.2	2.1	1.3	0.0	1.2	1.1	13.9	0.0	58.9
1800-1900 Peak hour	Pro	4.0	64.8	13.8	0.1	0.0	9.7	2.0	2.0	0.0	3.6
	Ocp	1.1	1.3	2.0	1.0	0.0	1.3	1.0	32.3	0.0	73.0
1900-2000	Pro	2.4	67.9	16.8	0.1	0.0	6.7	1.1	1.7	0.0	3.3
	Ocp	1.1	1.3	2.0	1.0	0.0	1.2	1.1	39.2	0.0	60.4
2000-2100	Pro	2.4	63.6	19.8	0.0	0.0	7.0	1.7	1.1	0.0	4.3
	Ocp	1.0	1.2	2.0	0.0	0.0	1.3	1.1	8.9	0.0	43.0
2100-2200	Pro	2.6	57.0	27.0	0.1	0.0	6.2	2.4	0.6	0.0	4.1
	Ocp	1.1	1.2	1.9	1.0	0.0	1.2	1.1	4.6	0.0	41.9
2200-2300	Pro	2.5	58.1	25.5	0.0	0.0	8.2	1.4	0.4	0.1	3.9
	Ocp	1.1	1.2	1.9	0.0	0.0	1.1	1.0	7.3	8.0	50.6
16 hours	Pro	2.8	52.8	18.4	0.3	0.0	15.7	5.2	1.7	0.1	3.3
	Ocp	1.1	1.2	2.0	4.6	0.0	1.2	1.1	16.6	8.0	50.5

**Legend: Pro.** Proportion of vehicles in % (Sum may not add up to 100% due to figure rounding)\*

**Ocp.** Average occupancy of vehicles including both driver and passengers\*

**M&H** Medium and Heavy

\* All traffic data are collected from combined bounds